

***ABBHEY PLAYERS, INC.***  
***Les Misérables: School Edition***  
***DRAFTING DOCUMENTS***

1. Theater Ground Plan
2. Theater Elevations
3. Platform Construction Elevations
4. Stage Right Elevations
5. Stage Right Paint Elevations
6. Stage Left Elevations
7. Stage Left Paint Elevations
8. Bridge Construction Elevations
9. Bridge Paint Elevations
10. Paint Ground Plan



**Abbey Players, INC.**

200 S State St,  
 Abbeville, LA 70510

***Les Misérables: School Edition***

***COVER PAGE***

DESIGNER: GAGE PACETTI

DIR. THE LEBLANCS

DATE: March 12, 2022



**Abbey Players, INC.**

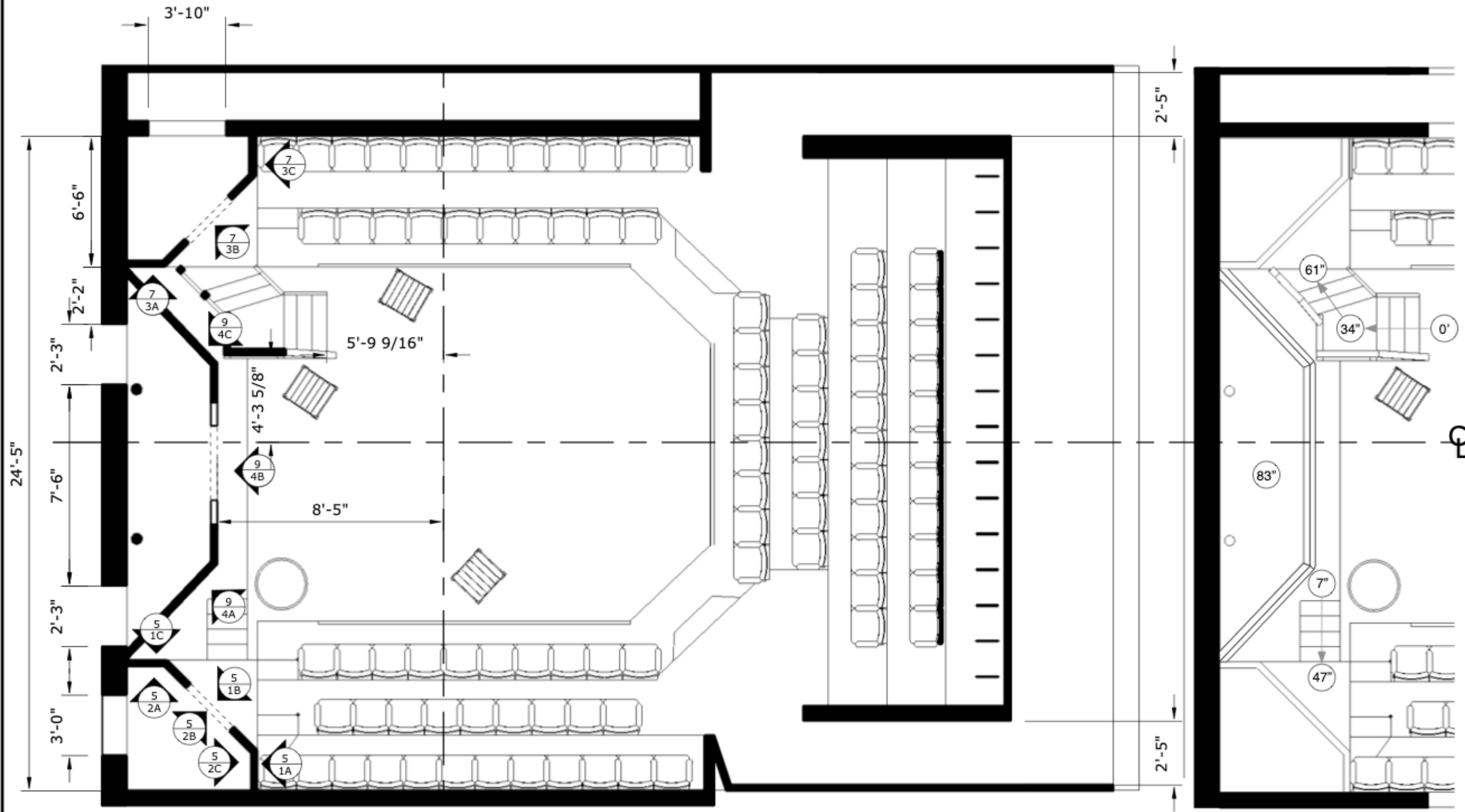
200 S State St,  
Abbeville, LA 70510

**Les Misérables: School Edition**

**THEATER GROUND PLAN**

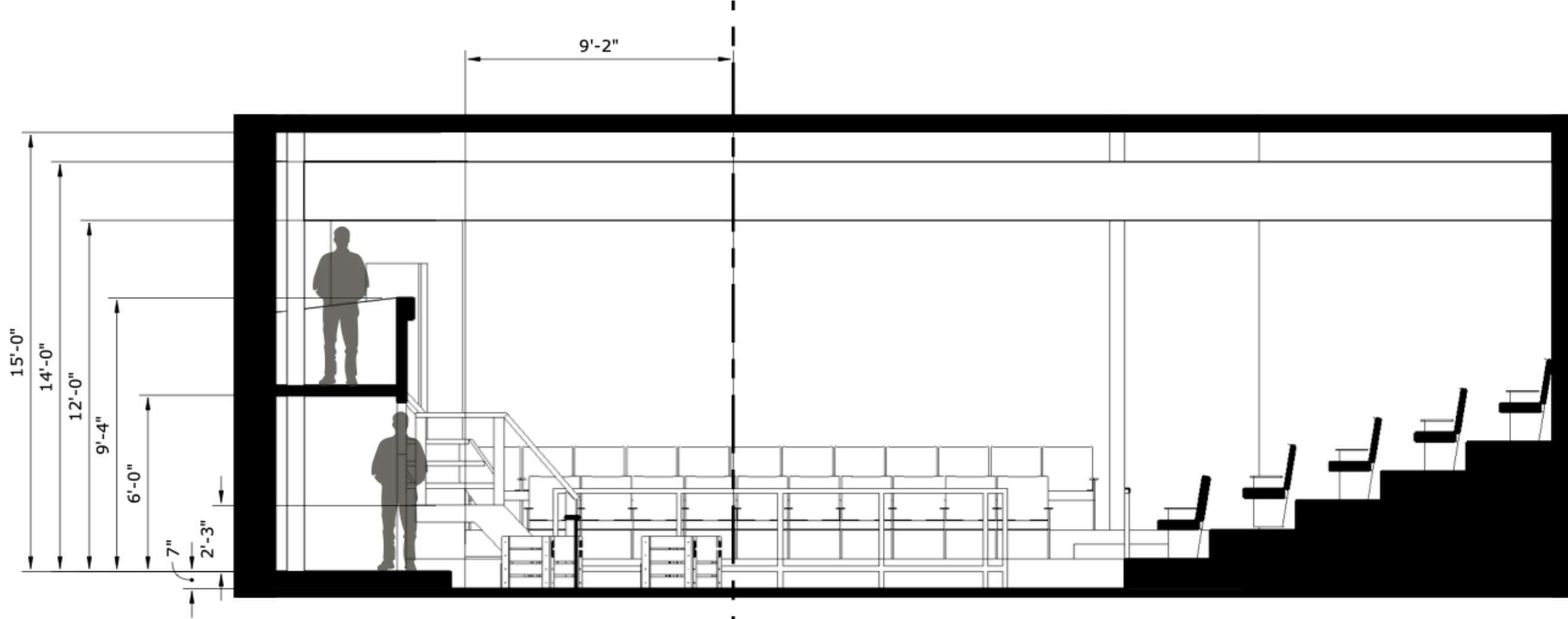
DESIGNER: GAGE PACETTI DIR. THE LEBLANCS

DATE: March 12, 2022 SCALE: 3/16" = 1' - 0"



**A**  
1 ABBEY PLAYER'S THEATER 1st LEVEL GROUND PLAN  
3/16" = 1' - 0"

**B**  
1 ABBEY PLAYER'S THEATER 2nd LEVEL GROUND PLAN  
3/16" = 1' - 0"



**A**  
**2** ABBEY PLAYER'S THEATER ELEVATION  
1/4" = 1' - 0"



**Abbey Players, INC.**

200 S State St,  
Abbeville, LA 70510

**Les Misérables: School Edition**

**THEATER ELEVATIONS**

DESIGNER: GAGE PACETTI

DIR. THE LEBLANCS

DATE: March 12, 2022

SCALE: 1/4" = 1' - 0"



**Abbey Players, INC.**

200 S State St,  
Abbeville, LA 70510

**Les Misérables: School Edition**

**BUILDING ELEVATIONS**

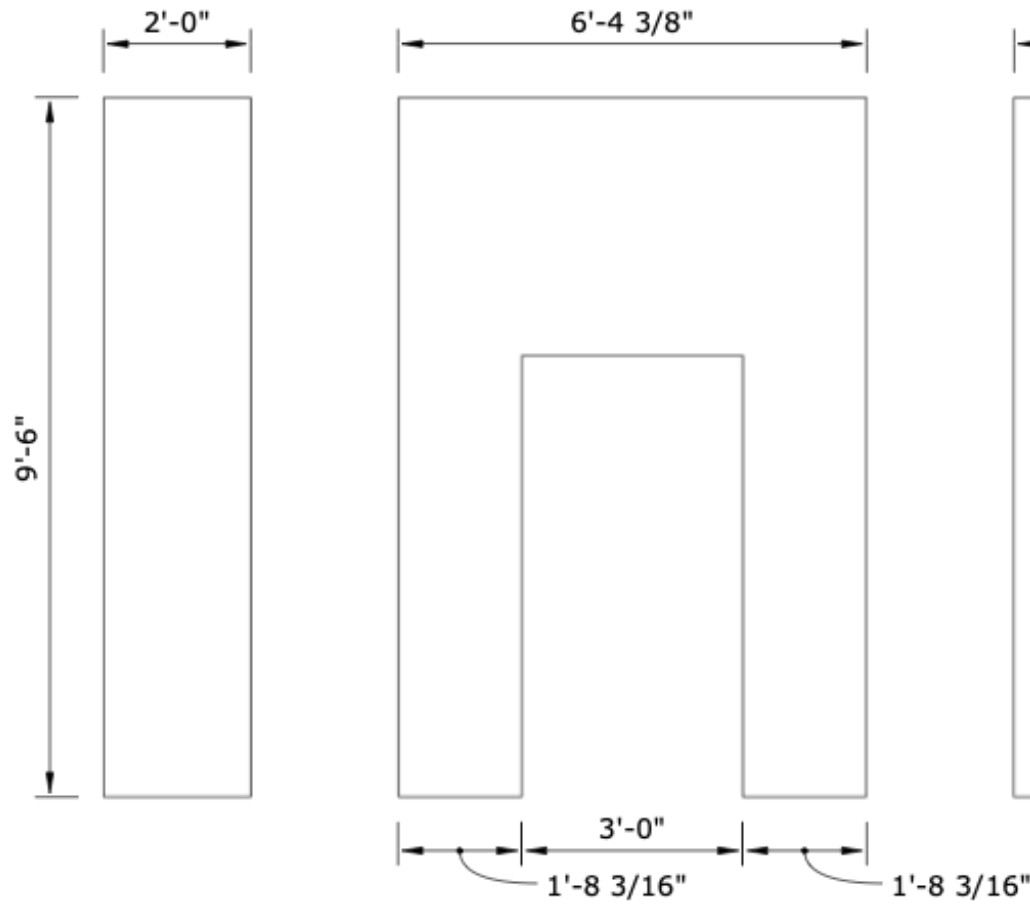
DIR. THE LEBLANCS

DESIGNER: GAGE PACETTI

SCALE: 3/8" = 1' - 0"

DATE: March 12, 2022

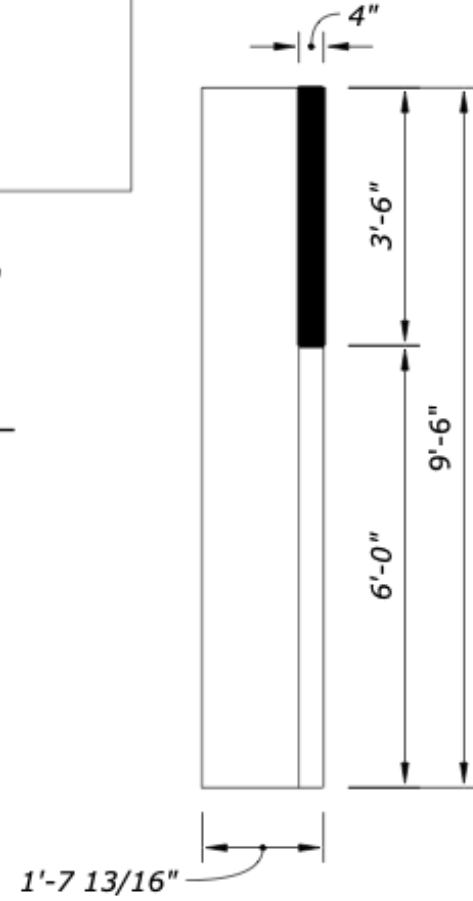
**3**



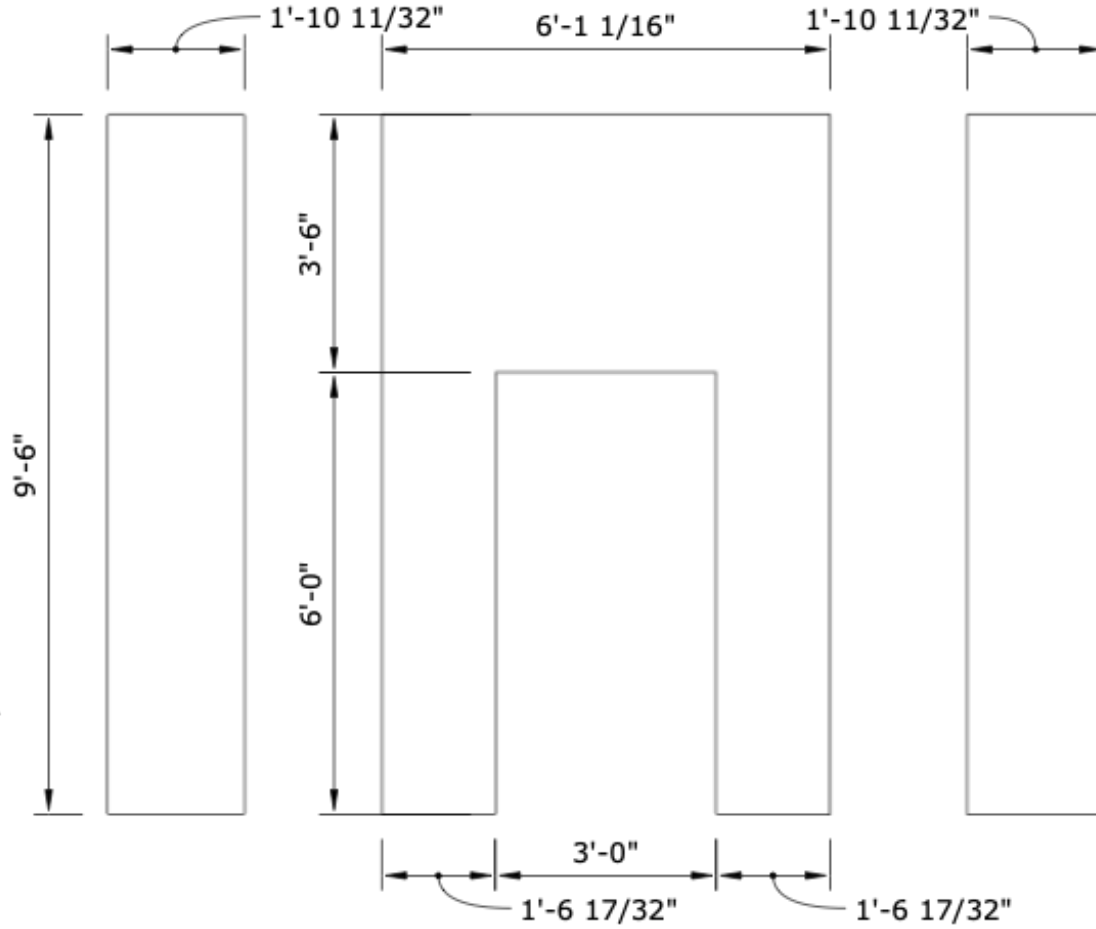
**A**  
**3** PLATFORM BUILDING EXT. ELEVATIONS (UNITS 1&3)  
3/8" = 1' - 0"



**C**  
**3** PLATFORM BUILDING INT. GROUND PLAN  
3/8" = 1' - 0"

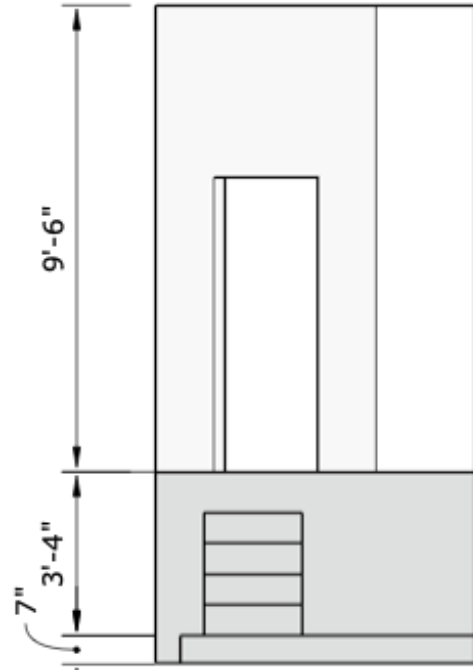


**D**  
**3** PLATFORM BUILDING SIDE SECTION  
3/8" = 1' - 0"

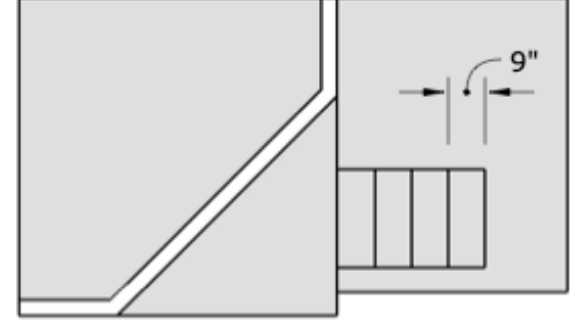
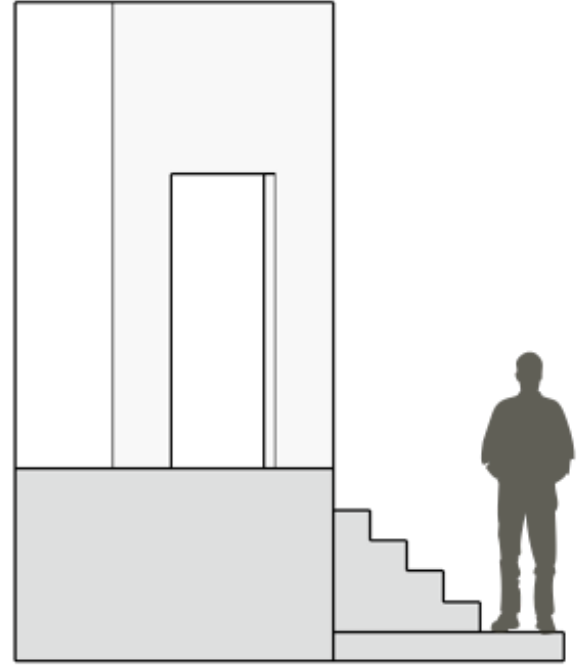


**B**  
**3** PLATFORM BUILDING INT. ELEVATIONS (UNIT 2)  
3/8" = 1' - 0"

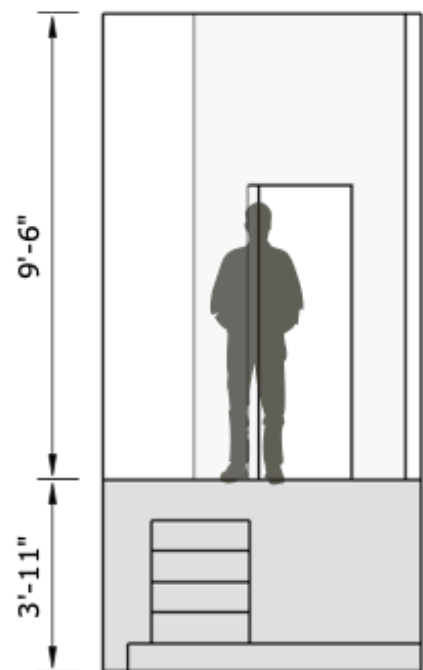
NOTES:  
BOTH "BUILDINGS" ARE THE SAME  
FOR EACH PLATFORM. TWO OF  
THESE WILL BE CONSTRUCTED.



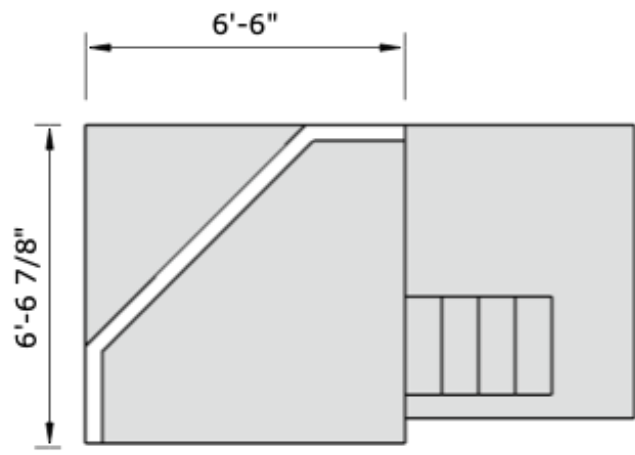
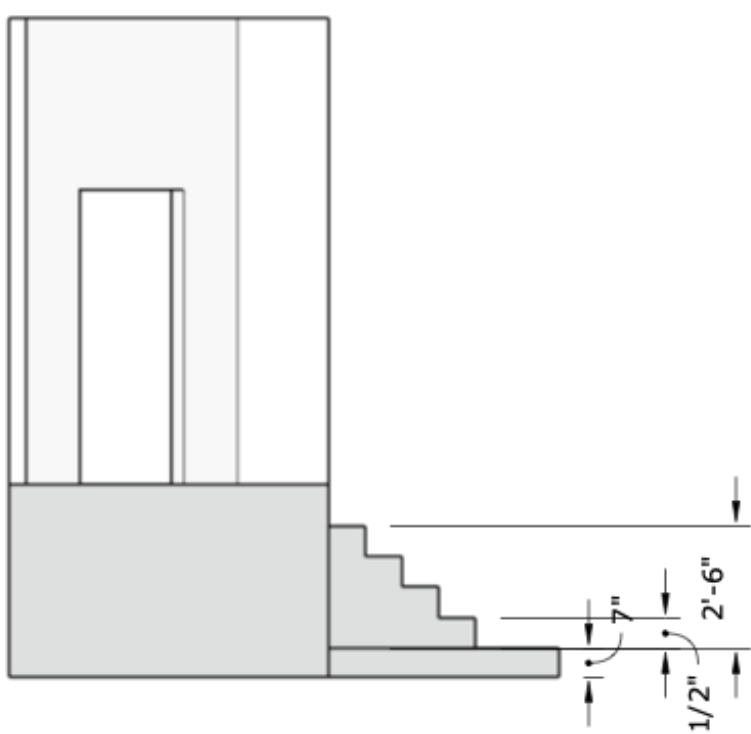
**A**  
**4** STAGE RIGHT PLATFORM EXT. ELEVATIONS (UNIT 1)  
1/4" = 1' - 0"



**B**  
**4** STAGE RIGHT PLATFORM EXT. GROUND PLAN (UNIT 1)  
1/4" = 1' - 0"



**C**  
**4** STAGE RIGHT PLATFORM INT. ELEVATIONS (UNIT 2)  
1/4" = 1' - 0"



**D**  
**4** STAGE RIGHT PLATFORM EXT. GROUND PLAN (UNIT 2)  
1/4" = 1' - 0"



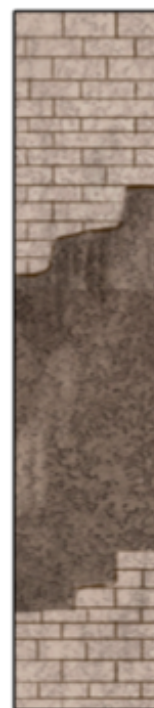
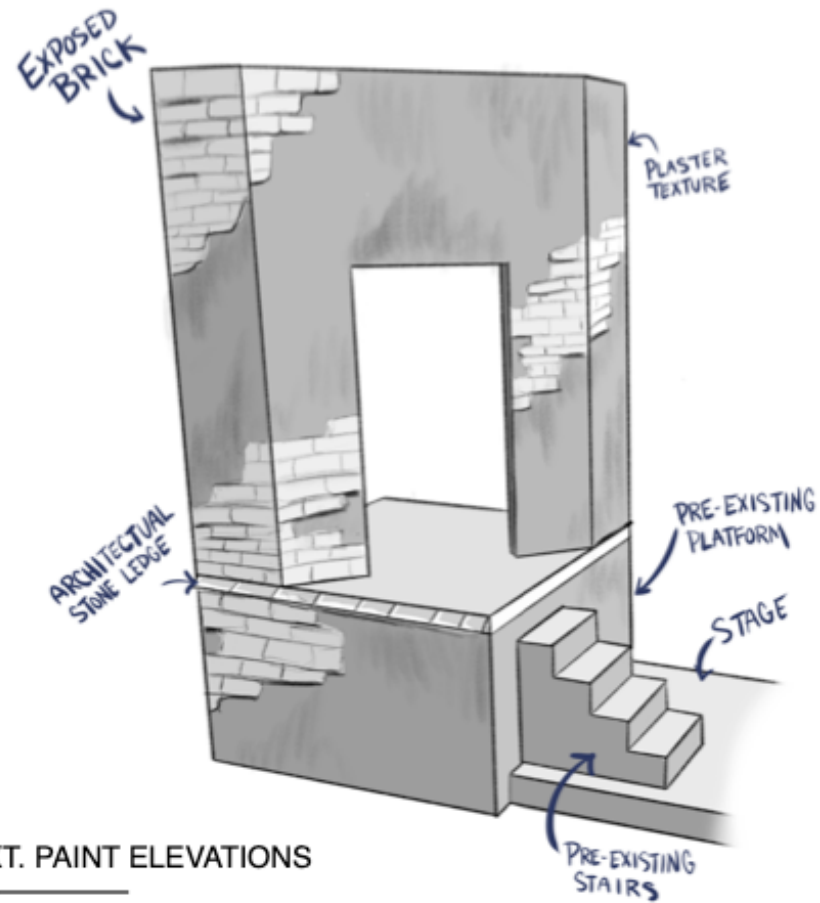
**Abbey Players, INC.**  
200 S State St,  
Abbeville, LA 70510

**Les Misérables: School Edition**

**SR BUILDING ELEVATIONS**

DESIGNER: GAGE PACETTI      DIR. THE LEBLANCS

DATE: March 12, 2022      SCALE: 1/4" = 1' - 0"



5  
1A

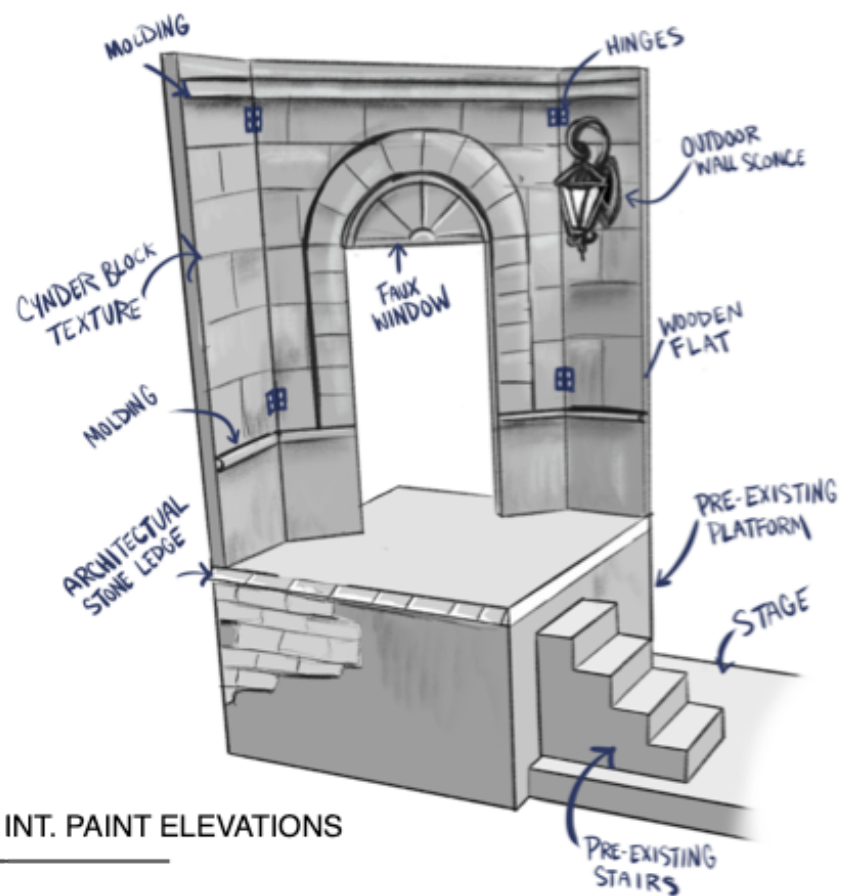


5  
1B

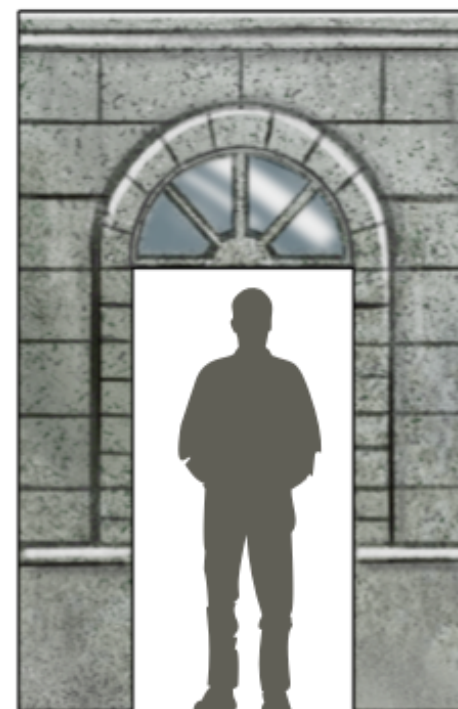


5  
1C

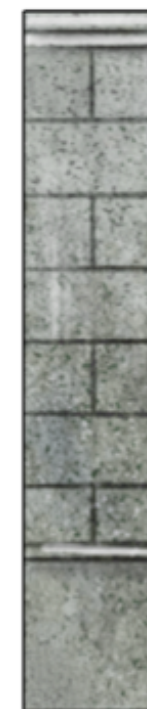
**A**  
**5** STAGE RIGHT PLATFORM EXT. PAINT ELEVATIONS  
3/8" = 1' - 0"



5  
2A



5  
2B



5  
2C

**B**  
**5** STAGE RIGHT PLATFORM INT. PAINT ELEVATIONS  
3/8" = 1' - 0"



**Abbey Players, INC.**

200 S State St,  
Abbeville, LA 70510

**Les Misérables: School Edition**

**SR PAINT ELEVATIONS**

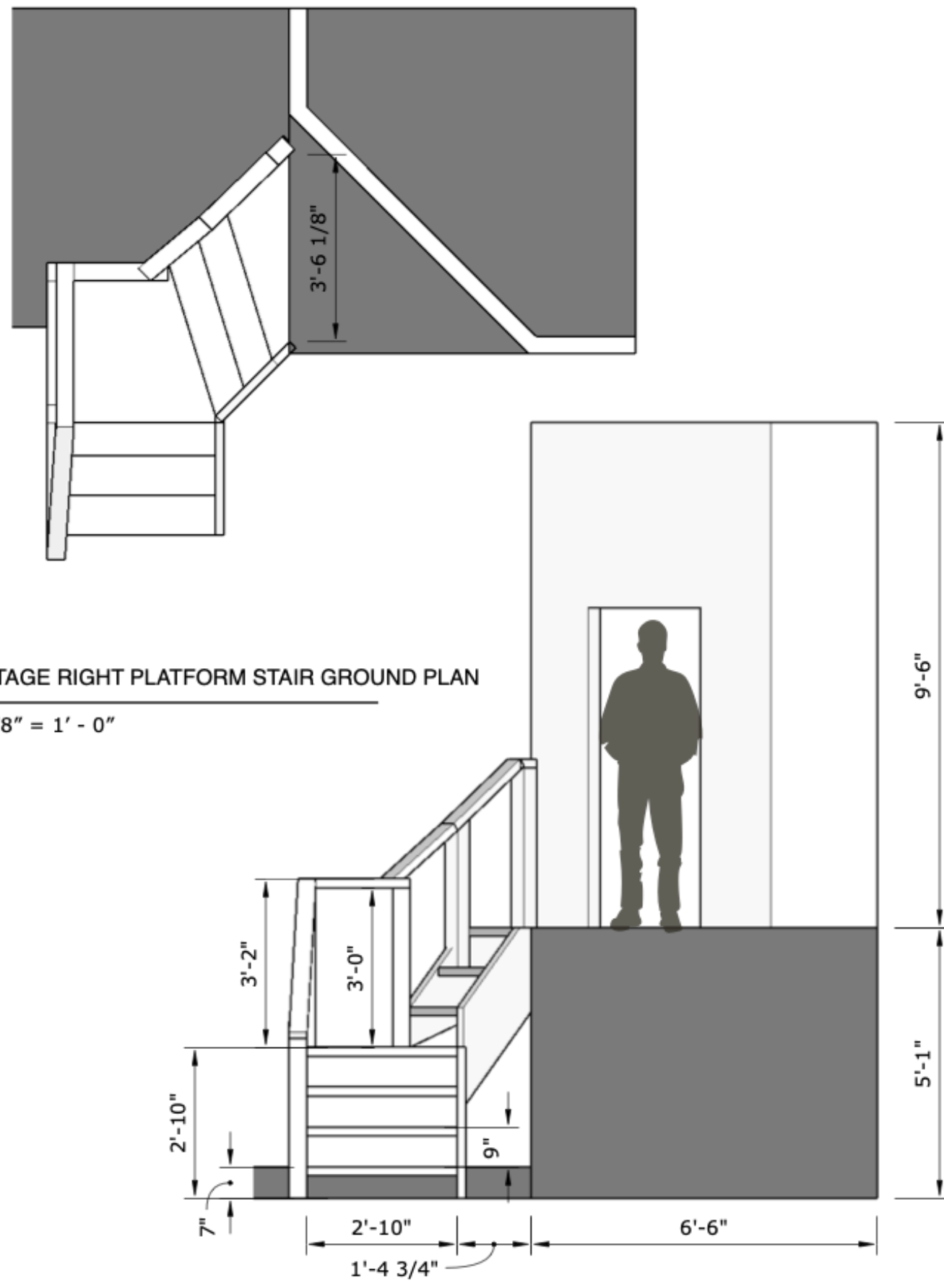
DESIGNER: GAGE PACETTI

DIR. THE LEBLANCS

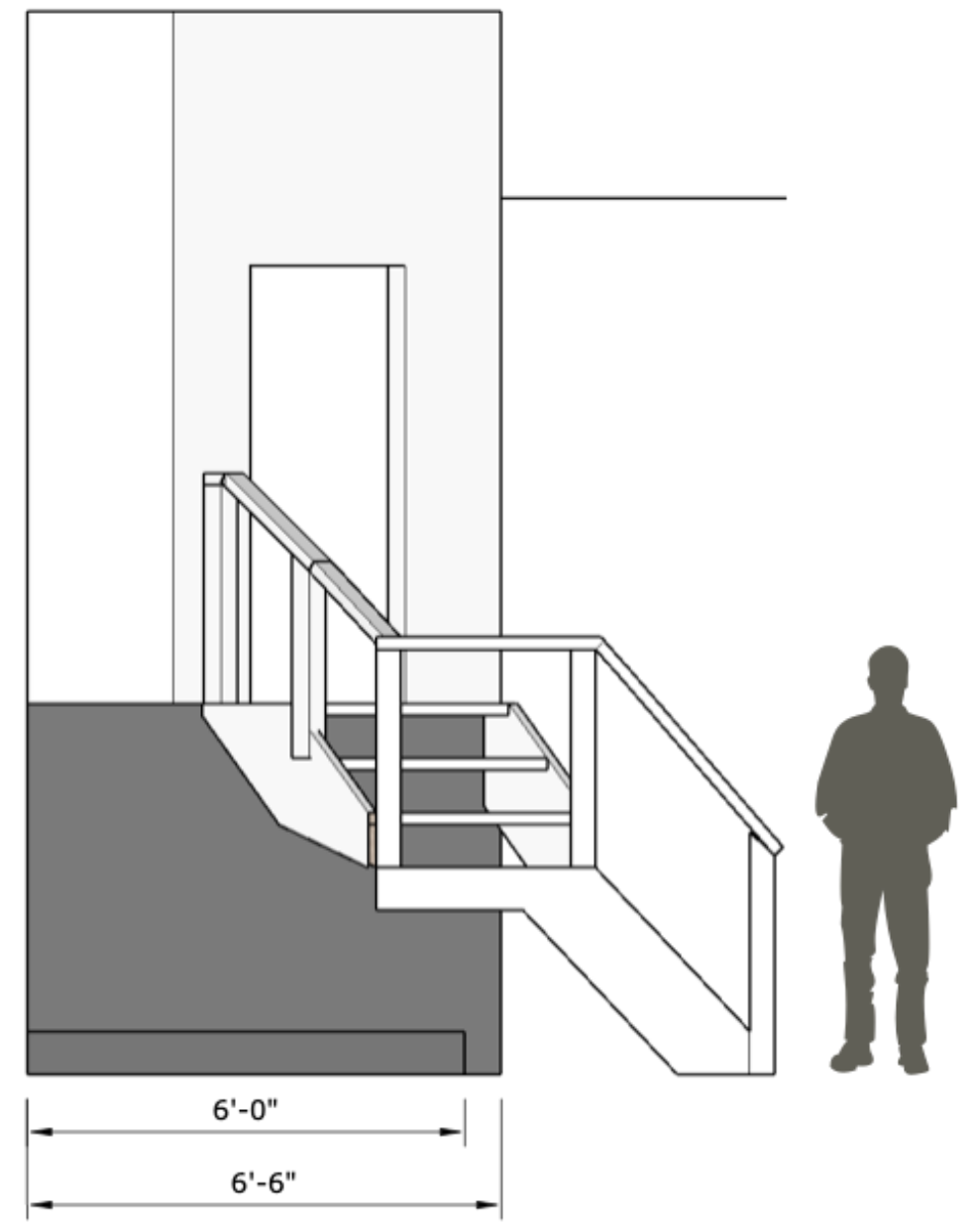
DATE: March 12, 2022

SCALE: 3/8" = 1' - 0"

**A** STAGE RIGHT PLATFORM STAIR GROUND PLAN  
**6** 3/8" = 1' - 0"



**B** STAGE RIGHT PLATFORM STAIR ELEVATIONS  
**6** 3/8" = 1' - 0"



**Abbey Players, INC.**  
 200 S State St,  
 Abbeville, LA 70510

**Les Misérables: School Edition**

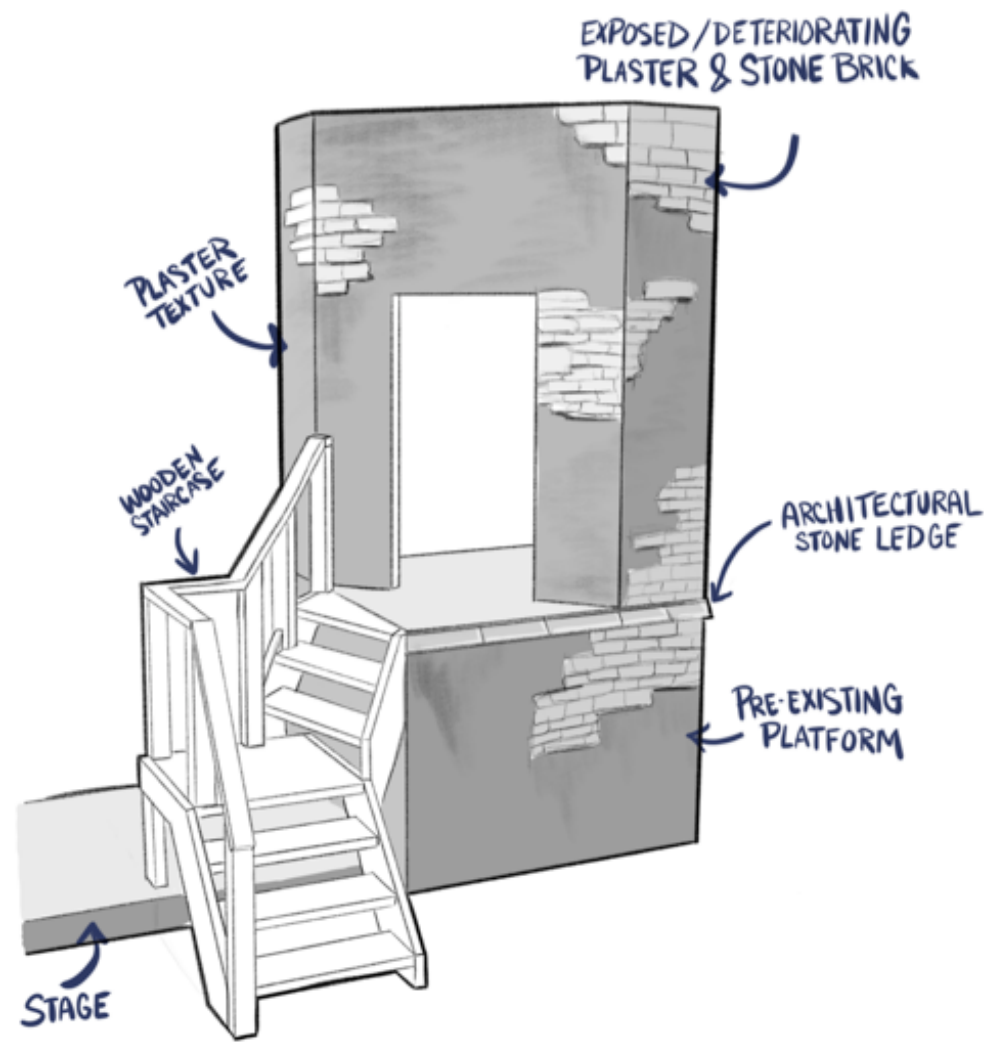
STAGE LEFT STAIR ELEVATIONS

DESIGNER: GAGE PACETTI

DIR. THE LEBLANCS

DATE: March 12, 2022

SCALE: 3/8" = 1' - 0"



7  
3A



7  
3B



7  
3C

A  
7 STAGE LEFT PLATFORM INT. PAINT ELEVATIONS  
 1/2" = 1' - 0"



**Abbey Players, INC.**

200 S State St,  
Abbeville, LA 70510

**Les Misérables: School Edition**

**SL PAINT ELEVATIONS**

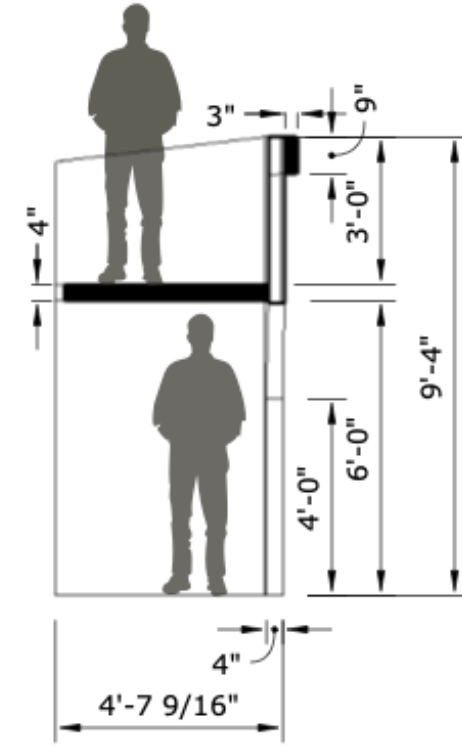
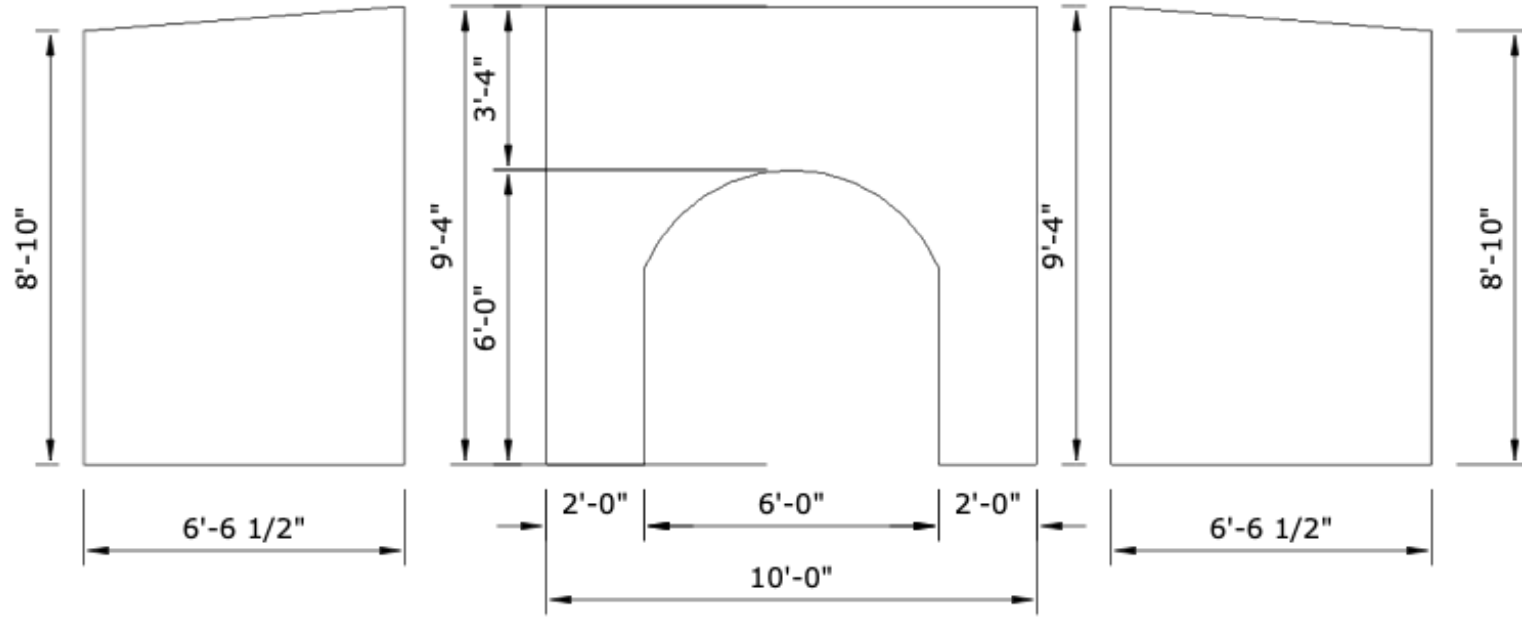
DESIGNER: GAGE PACETTI

DIR. THE LEBLANCS

DATE: March 12, 2022

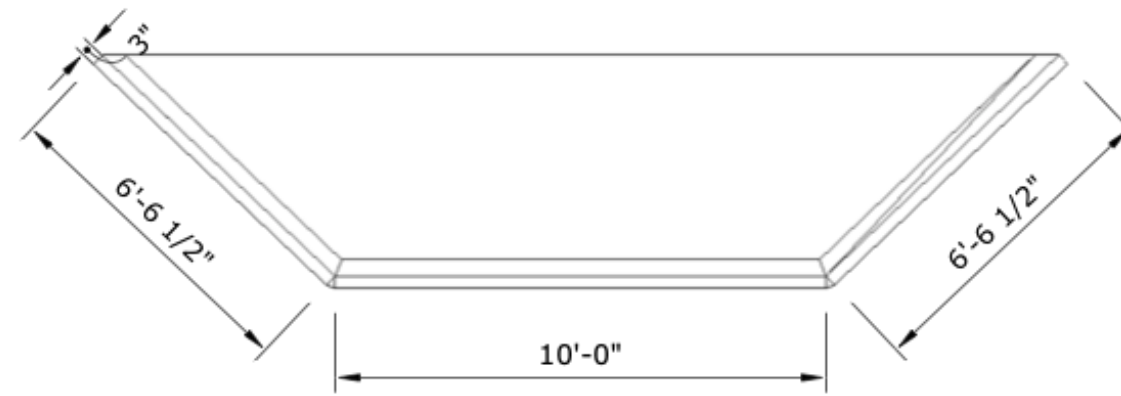
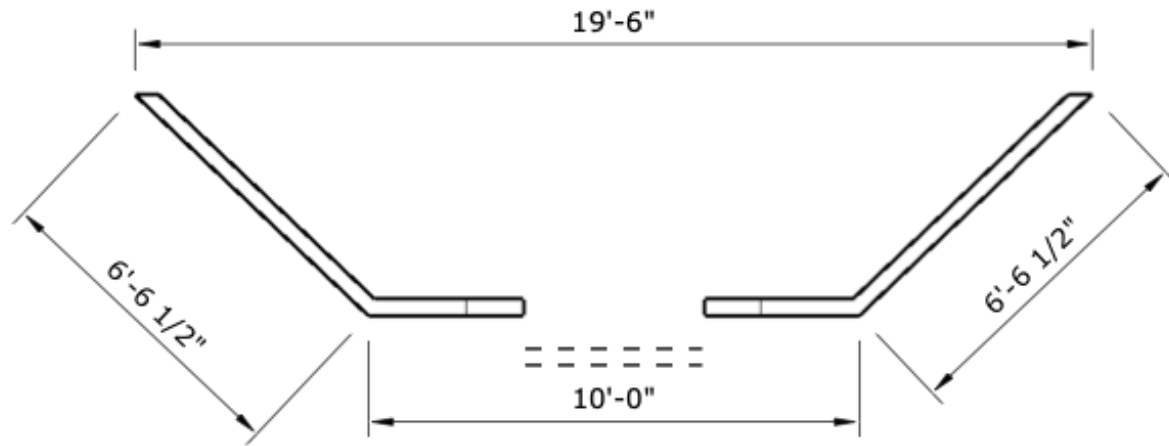
SCALE: 1/2" = 1' - 0"





**A** BRIDGE WALL ELEVATIONS  
**8** 1/4" = 1' - 0"

**B** BRIDGE SECTION CUT  
**8** 1/4" = 1' - 0"



**C** BRIDGE 1st LEVEL GROUND PLAN  
**8** 1/4" = 1' - 0"

**D** BRIDGE 2nd LEVEL GROUND PLAN  
**8** 1/4" = 1' - 0"



**Abbey Players, INC.**

200 S State St,  
 Abbeville, LA 70510

**Les Misérables: School Edition**

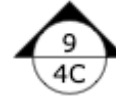
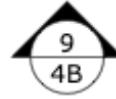
**BRIDGE SCHEMATICS**

DESIGNER: GAGE PACETTI

DIR. THE LEBLANCS

DATE: March 12, 2022

SCALE: 1/4" = 1' - 0"



A  
9

BRIDGE PAINT ELEVATIONS

3/8" = 1' - 0"



**Abbey Players, INC.**

200 S State St,  
Abbeville, LA 70510

**Les Misérables: School Edition**

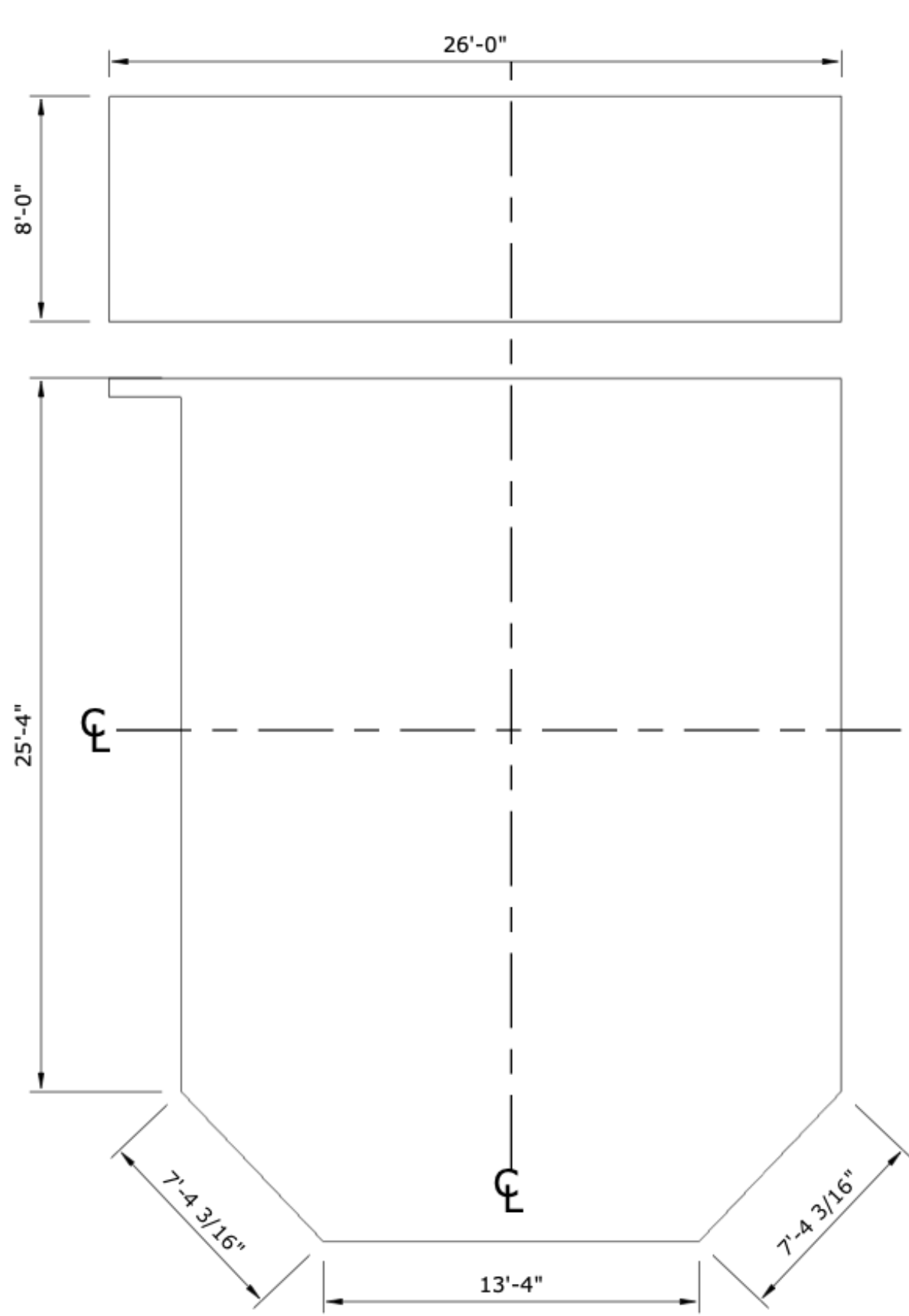
**BRIDGE PAINT ELEVATIONS**

DESIGNER: GAGE PACETTI

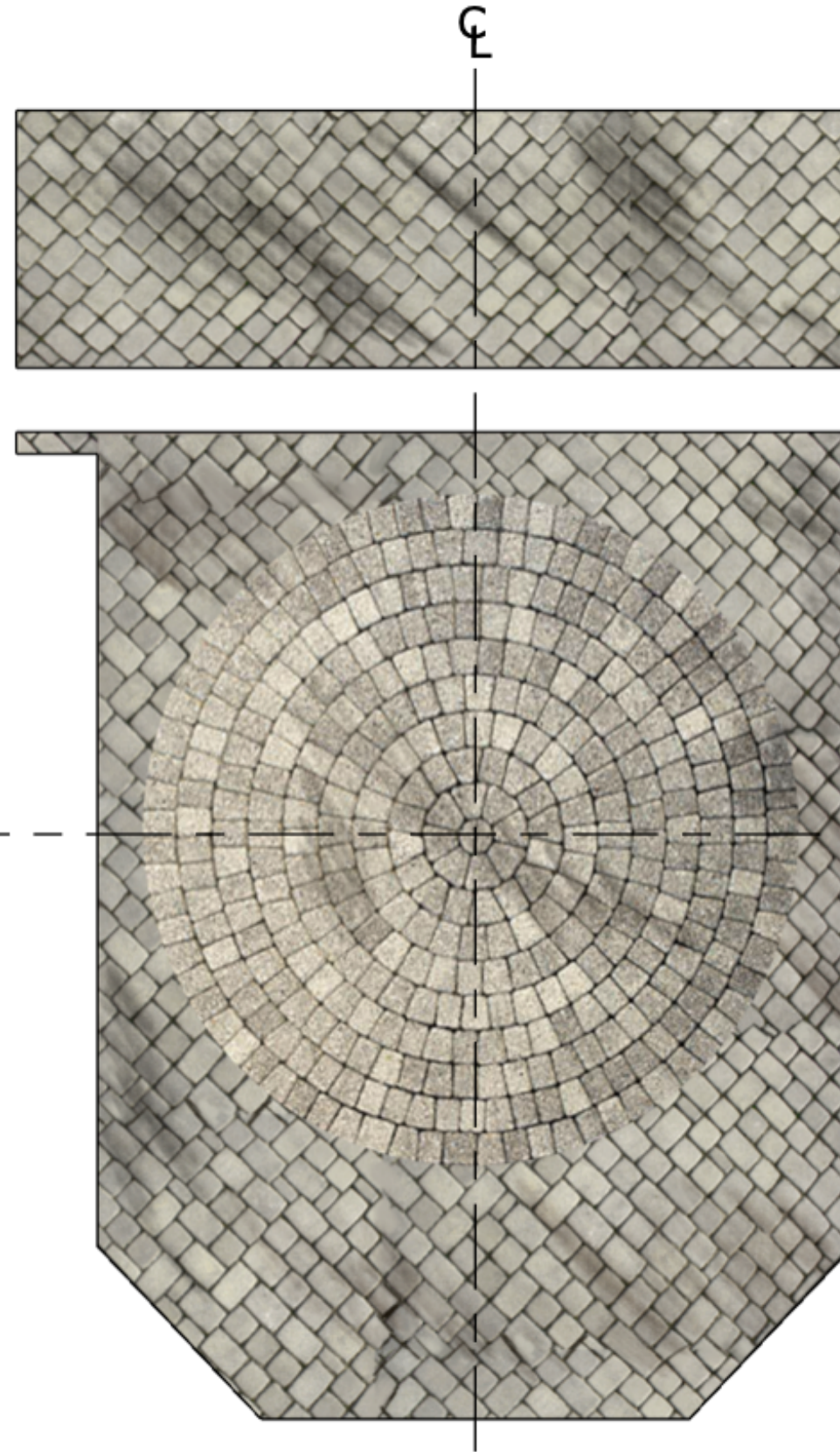
DIR. THE LEBLANCS

DATE: March 12, 2022

SCALE: 3/8" = 1' - 0"



**A**  
10 GROUND PLAN SCHEMATICS  
1/4" = 1' - 0"



**B**  
10 GROUND PLAN PAINT VIEW  
1/4" = 1' - 0"



**Abbey Players, INC.**

200 S State St,  
Abbeville, LA 70510

**Les Misérables: School Edition**

**GROUND PLAN PAINT VIEW**

DESIGNER: GAGE PACETTI

DIR. THE LEBLANCS

DATE: March 12, 2022

SCALE: 1/4" = 1' - 0"